

MATERIAL HANDLING SOLUTION



ACE CRANE INDIA PVT.LTD
By Vardhan Group Of Industries

Introduction to VARDHAN GROUP

About us

We would like to introduce Vardhan Group as India's largest volume manufacturer of eot cranes and earth mover related equipment and spare parts. We have taken pride in providing unique solutions to our clients to cater to their material handling needs through our wide product range and have supplied cranes to a wide spectrum of companies across industries and mining. Vardhan group believes in providing 'well-engineered' turnkey project solutions and we consider ourselves to be solutions, Our sales team won't just sell you a product from a catalogue, but is interested in understanding your handling requirements, plant layout, appreciate the constraints and develop an optimum solution. We will also be happy to provide information on wheel loads and crane geometry, and suggest alternatives to your architects and structural consultant to maximise space utilisation and minimise building costs, where possible. Through this approach, we hope to provide you with the best suited solution for your business.



Manufacturing & Systems

- **Our manufacturing facility spread over 11600 sqmtr, a covered area, making it Bangalore & Ahmedabad. one of the largest manufacturing facility for EOT Cranes sales & service with Import & Export Facility, Our manufacturing techniques are on par with international standards.**

for the crane girders to shot blasting and a dedicated paint booth for finished crane components. Our quality management systems are aligned with the requirements of ISO, NSIC & MSME have been certified company.

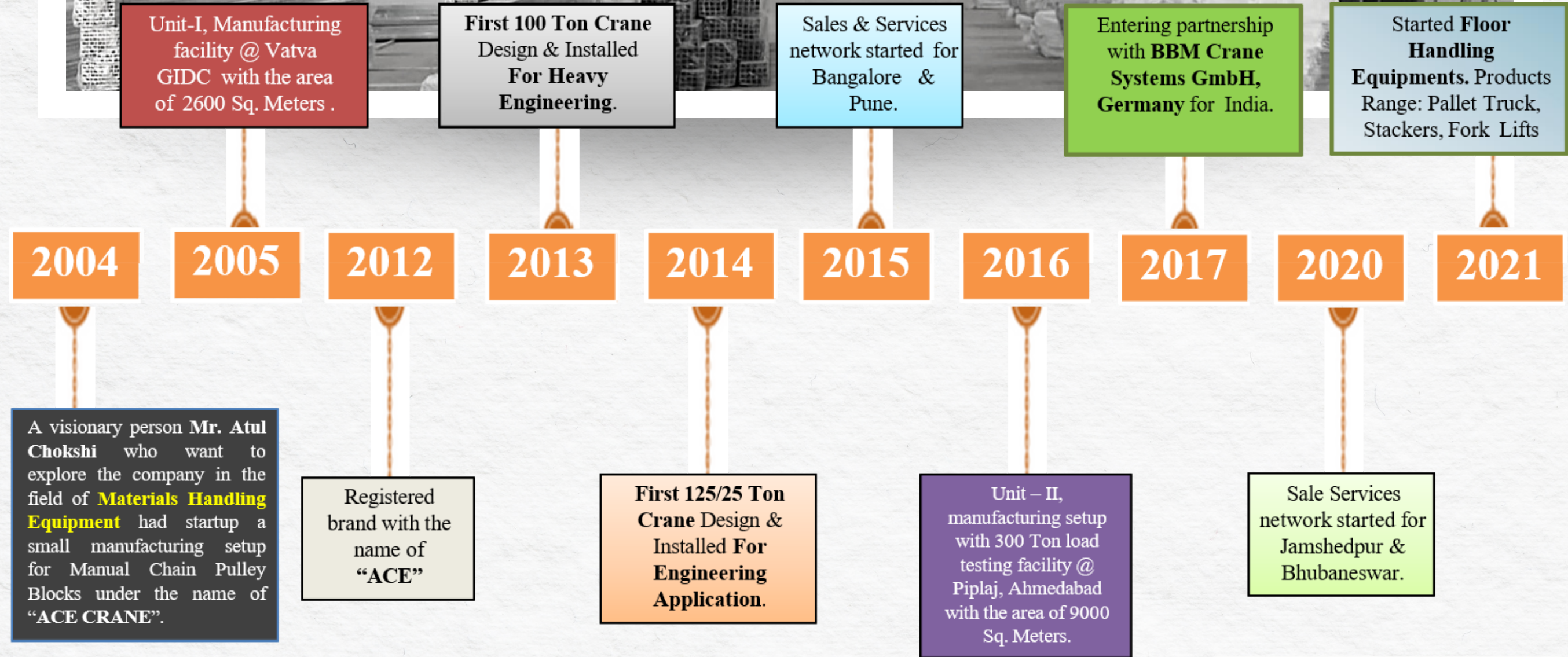
Service & Support :

Our crane installation and commissioning of hoisting solutions, on to helping clients with the ongoing care, repairs, and modernizations of hoisting solutions in a cost effective manner, 24 x7 service response time across any part of the country, thanks to our network of 05 offices MUMBAI, BANGALORE, PUNE JAMSHEDPUR & BHUBANESWAR.

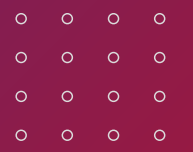
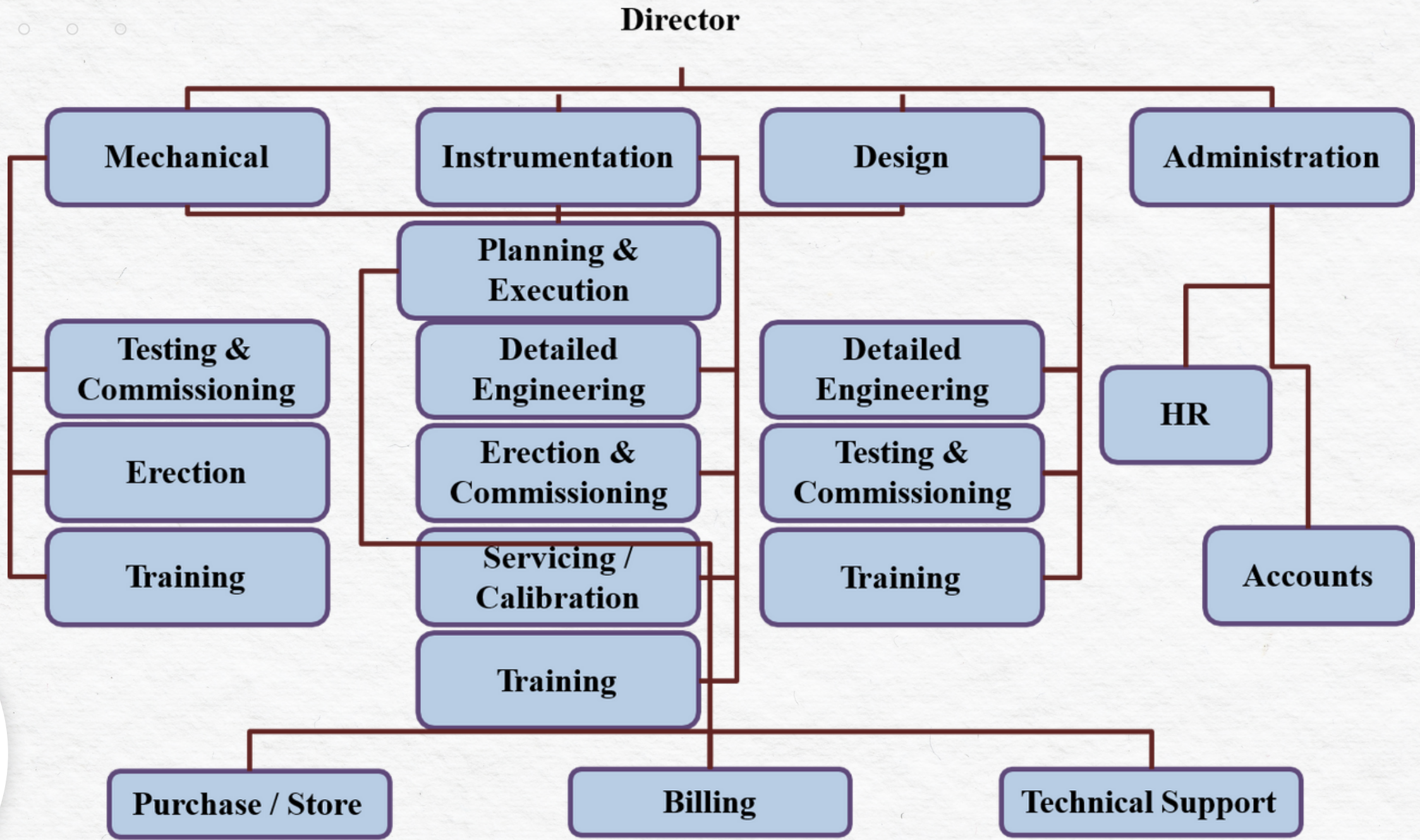
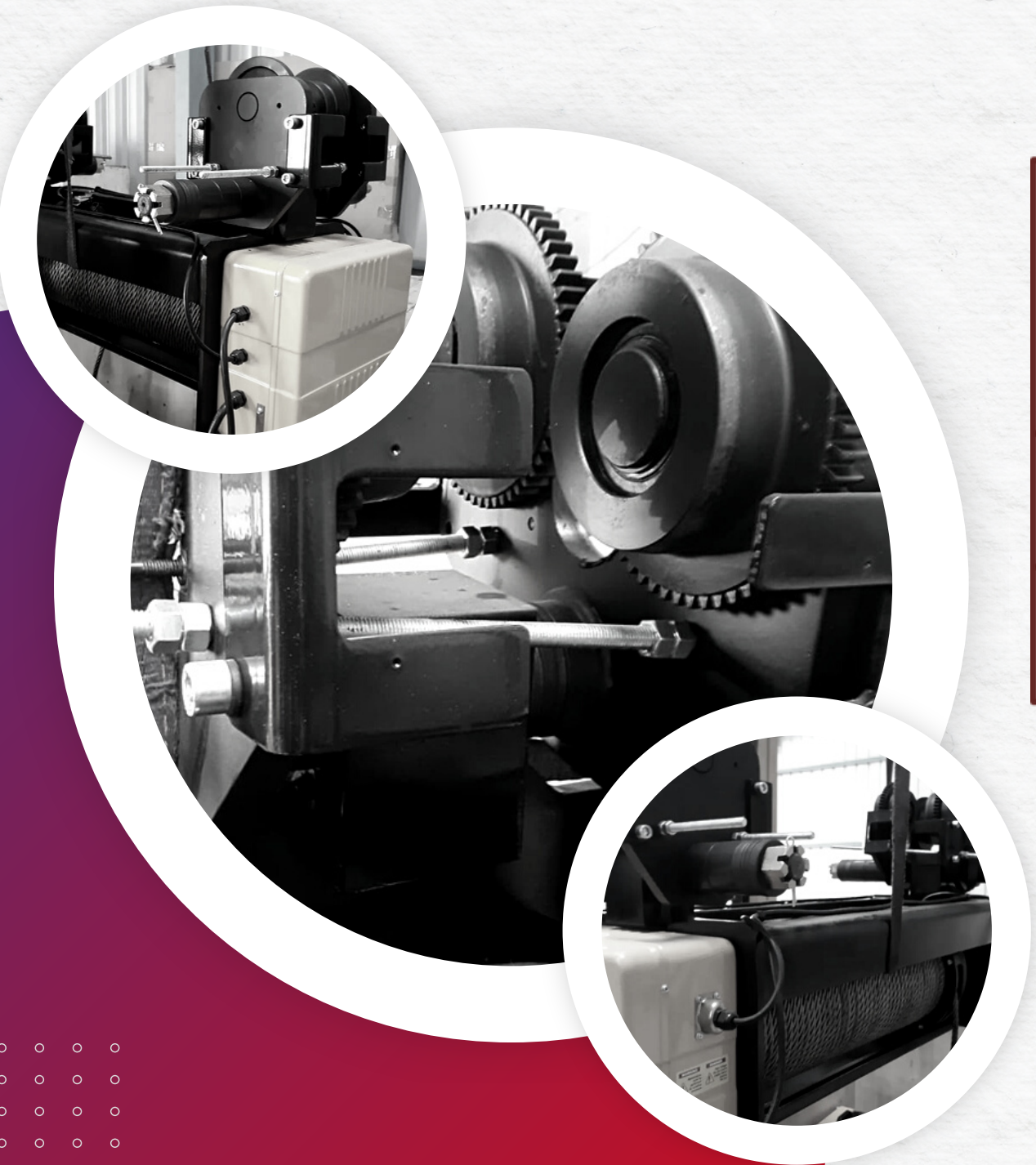
We look forward to a chance to showcase our products and services to you.



OUR Journey



ORGANISATION CHART



Our Products

ACE CRANE' products are sold under popular & most reliable brand, "ACE". These products are also designed and manufactured as per international standards. The range & type of ACE products are briefly listed below :-

- EOT Cranes ranging from 1.6 Ton to 300 Ton lifting capacity* Goliath/Gantry Cranes ranging from 1.6 Ton to 200 Ton lifting capacity*
- Wall Mounted & Pillar Mounted Jib Cranes, Semi-Gantry Cranes, Under Slung Cranes, Circular Cranes & Hoists, etc.
- Imported Electric Wire Rope Hoists from 1.6 Ton to 30 Tons.
- Transfer Trolley to move heavy loads up to 300 Tons. Crane kits & Crane Accessories.

Manufacturing Plant



Unit-I

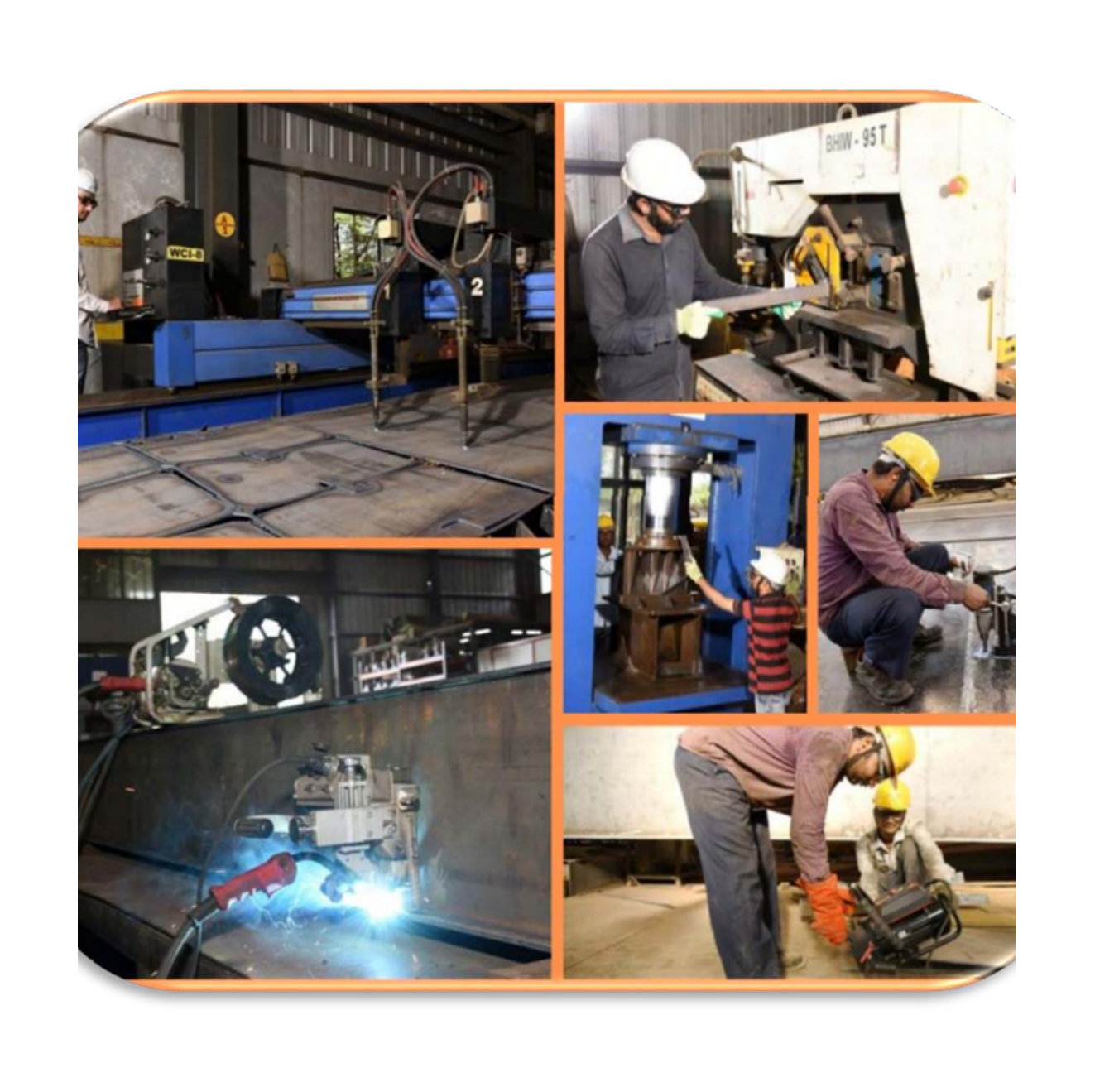
Area of 2600 Sq. Meters.
Manufacturing setup for Hoists,
Crane KITS & Components.
Production Capacity: 700 Nos. /
year.

Unit-II

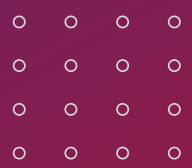
Area of 9000 Sq. Meters.
Manufacturing setup for all
type of Cranes.
Production Capacity: 300 Nos. /
year.



Manufacturing Facility



- CNC Plasma Cutting Machine.
- Automatic Welding Machine.
- Beveling Machine for edge preparation.
- Lathe Machines.
- Hydraulic Press Machine.
- Overhead EOT Cranes up to 30 Ton.





Our Strength

DesignTeam:-

10+ Years experienced design team
(Electrical & Mechanical)

Design Software: Auto Desk, Solid Works.

Analysis Software: STAAD PRO, ANSYS.

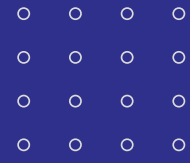
Sales&ServiceNetwork:-

Offer Management Team: 5+

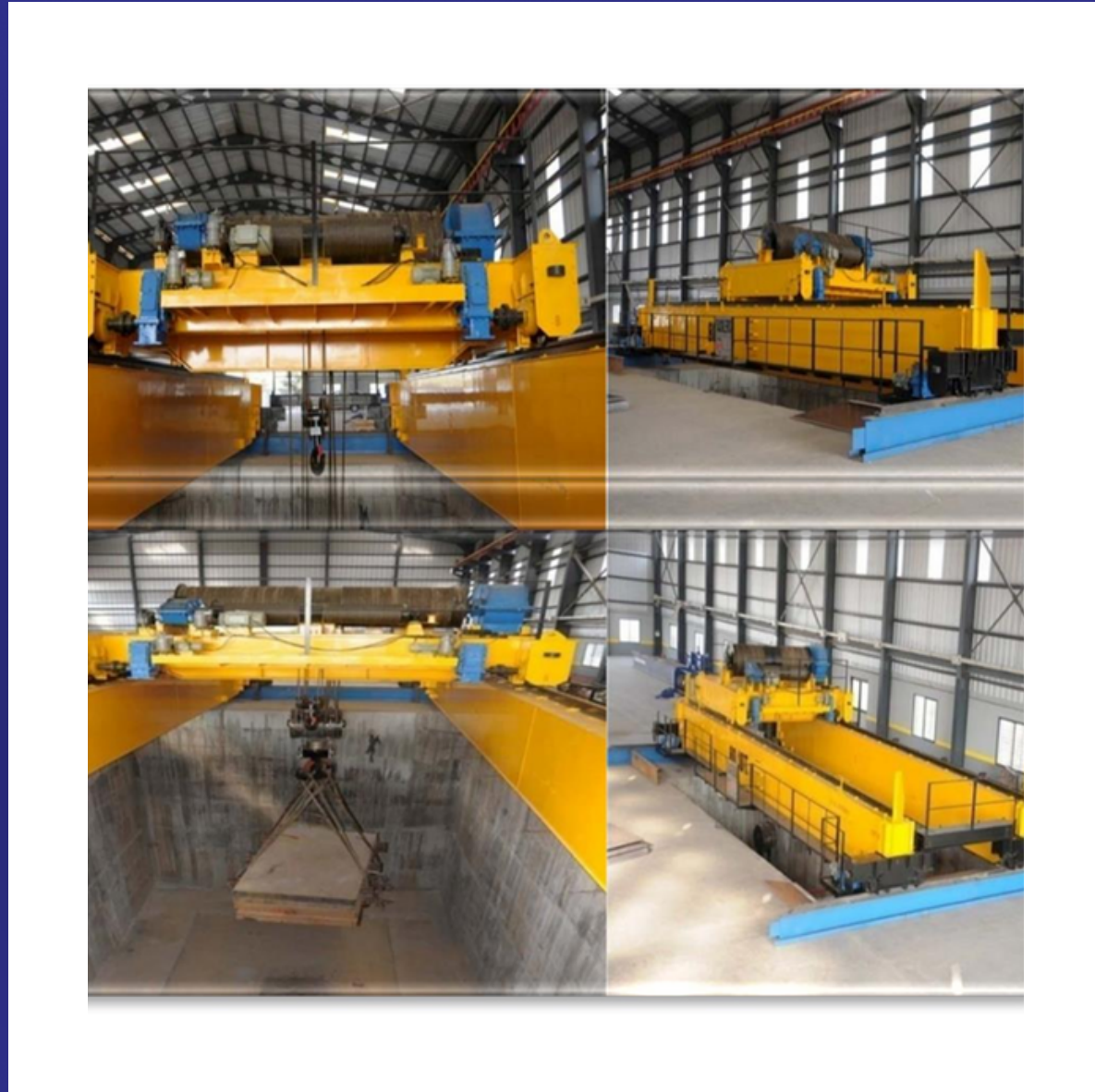
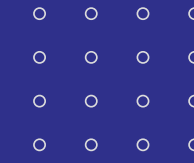
Sales & Marketing Team: 10+

Spares & Service Team: 15+





In House Testing



- For Cranes – Load pit with 300Ton Capacity
- (Pit size: – 9 meter height x 7 meter width x 12 meter length).
- For Hoists –Testing bench with 50Ton Capacity.
- Complete inspection and testing as per IS Standard.
- Having Special Crab and crane span setting benches.
- 100TonMSSlabs available which are to be lifted with special lifting beam.
- Separate panel wherein one can witness no load, full load amps, crane deflection, speed measurement etc.
- Having facility to witness crane testing & load test from different location through a camera installed in pit.



SINGLE GIRDER & DOUBLE GIRDER CRANES.



Surface Treatment

All structural parts of cranes are applied with sand blasting treatment, single coat of primer and two coats of synthetic enamel paints.

Epoxy paint and P.U. paint are on request.

Single Girder Overhead Cranes.

Capacity : 1.6 to 30 ton.

Span : Up to 35 mtrs.

Long Travel Speed : Up to 60 mtrs / min.

Cross Travel Speed : Up to 20 mtrs / min.

Double Girder Overhead Cranes.

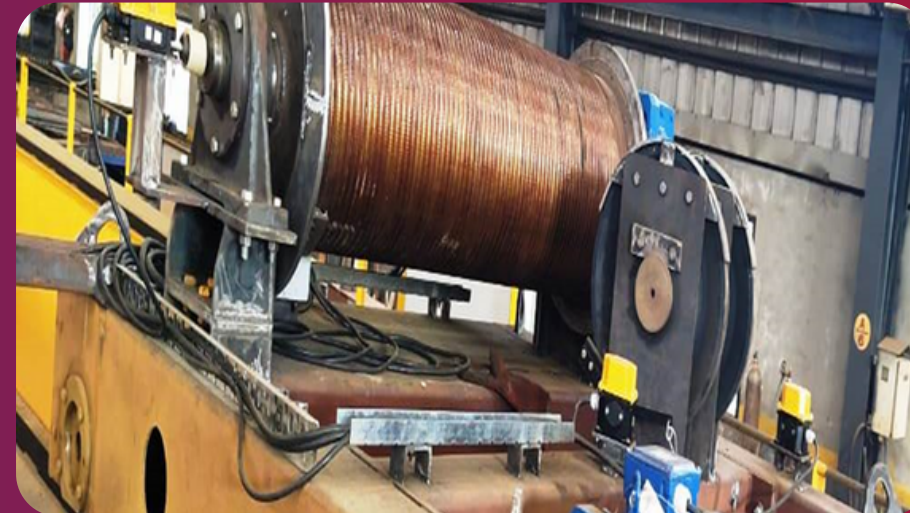
Capacity : 5 to 300 ton.

Span : Up to 40 mtrs.

Long Travel Speed : Up to 60 mtrs / min.

Cross Travel Speed : Up to 25 mtrs / min.

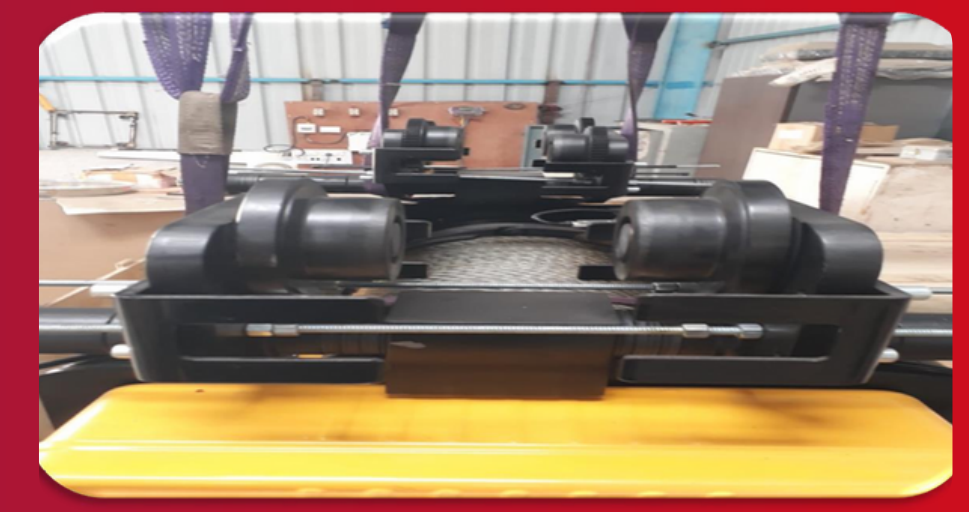
Indian Wire Rope Crab



Maintenance Free Wire Rope Crab



IMPORTED Wire Rope Hoist



IMPORTED Modular Hoist

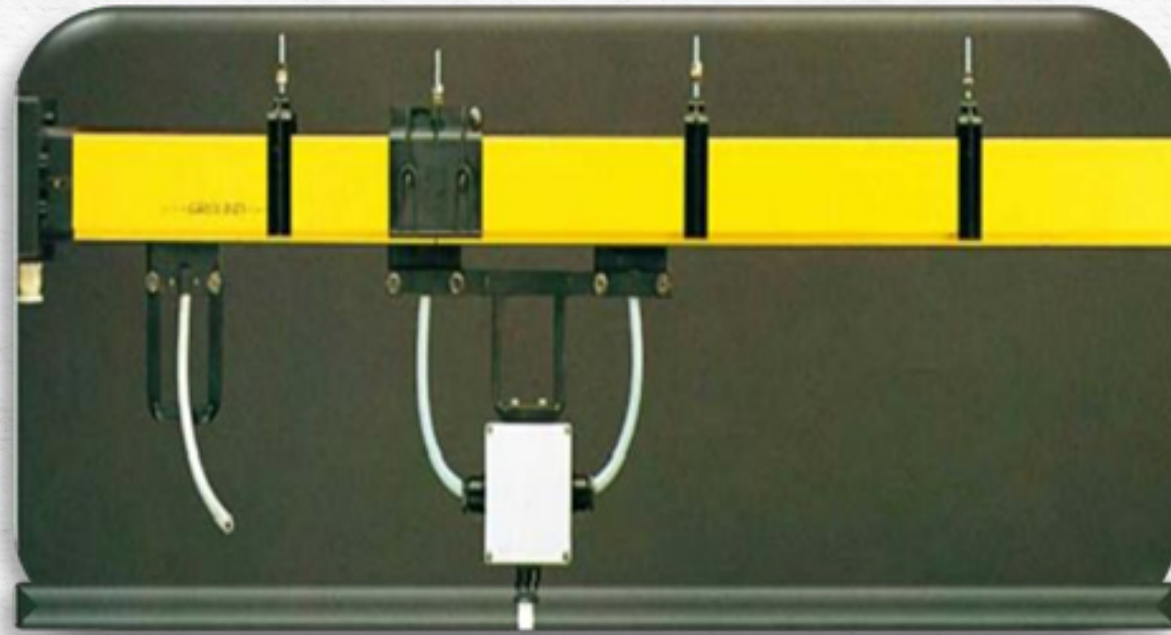


IMPORTED Chain Hoist



Crane Accessories

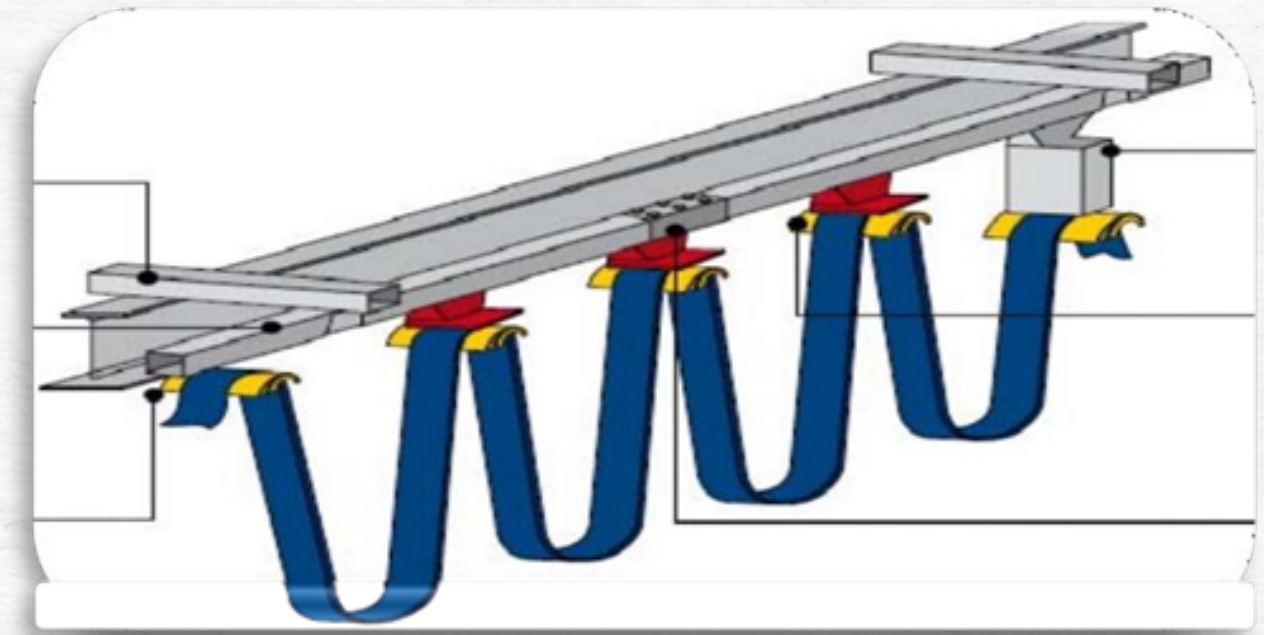
DSL – Box Type Copper Shrouded System



Pendant Stations



Festoon Systems – C Rail



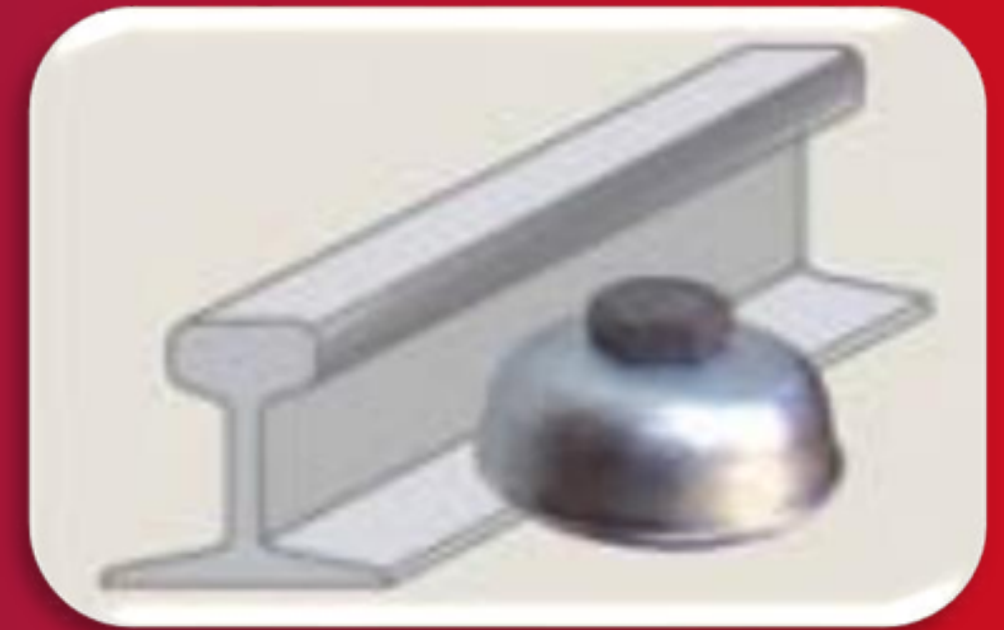
Limit Switches



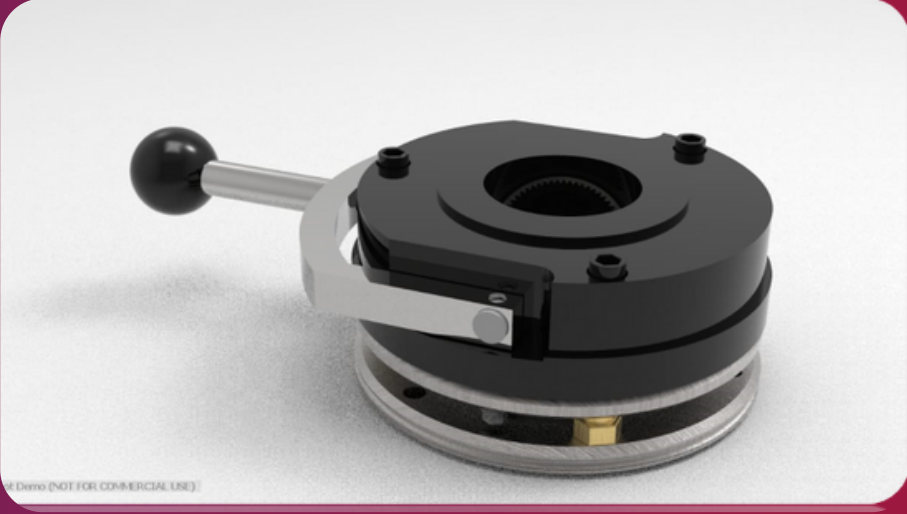
Radio Remote Controls



Rail Clamps



Crane Accessories



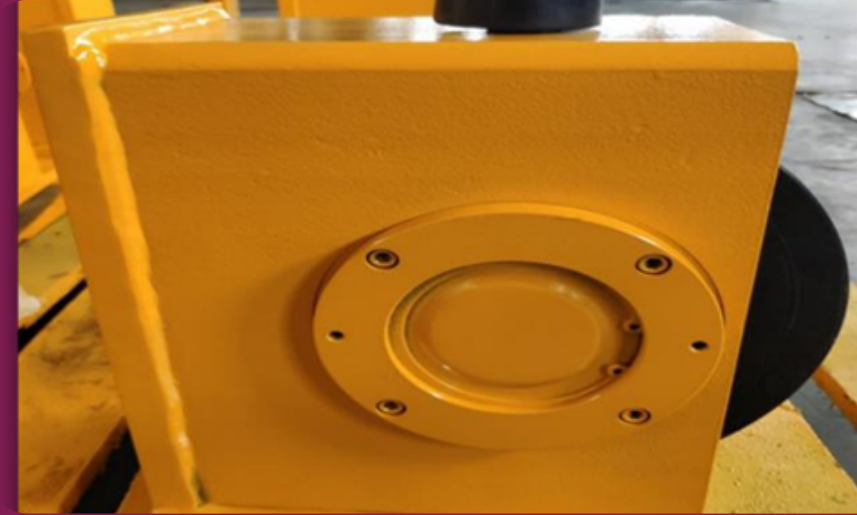
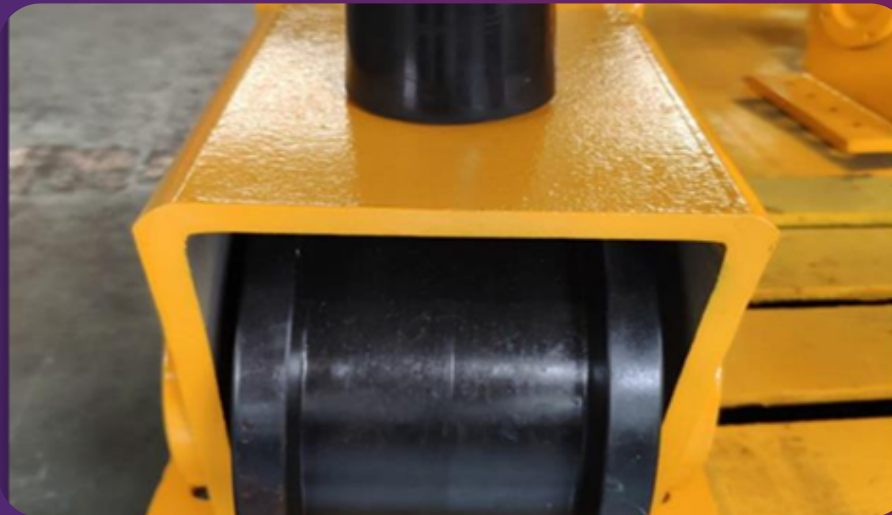
Some Installation



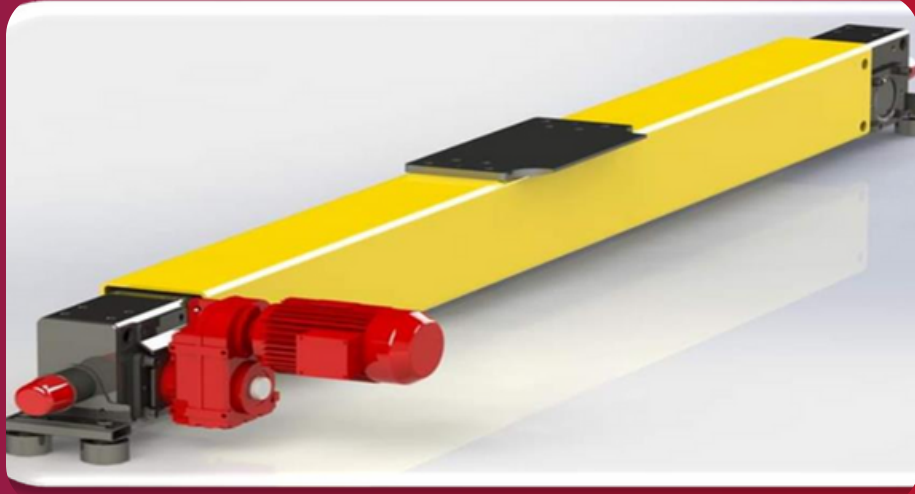
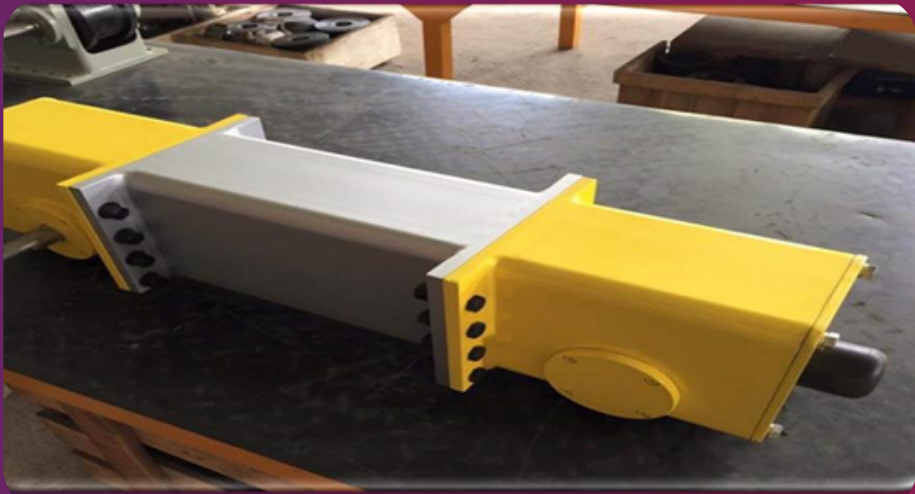
Some Installation



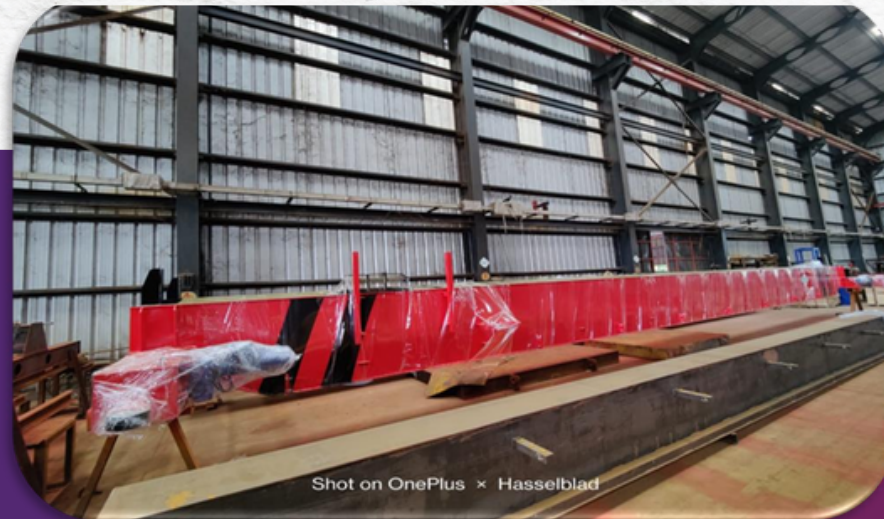
Wheel Block Manufacturing



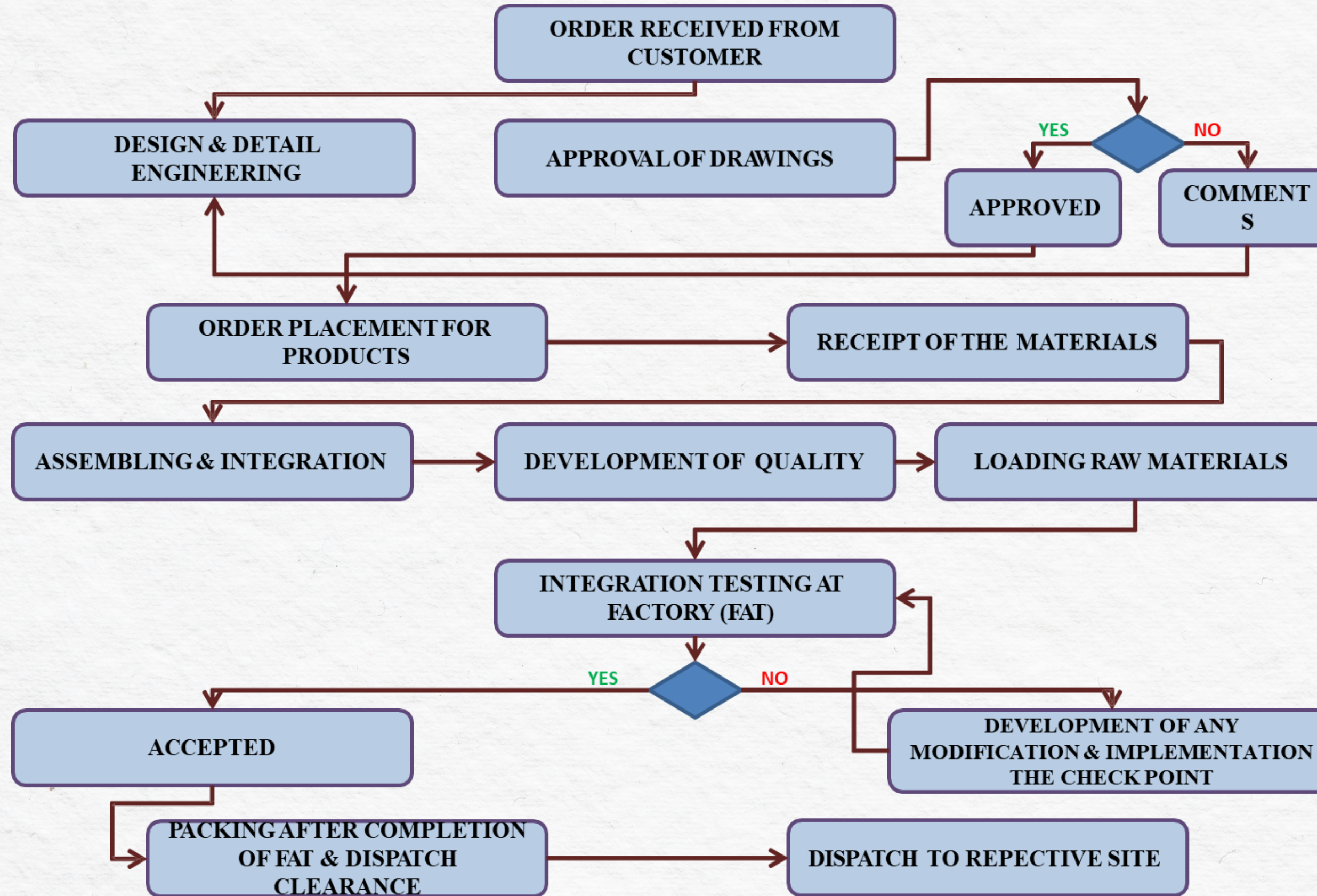
Long Travel Trolley



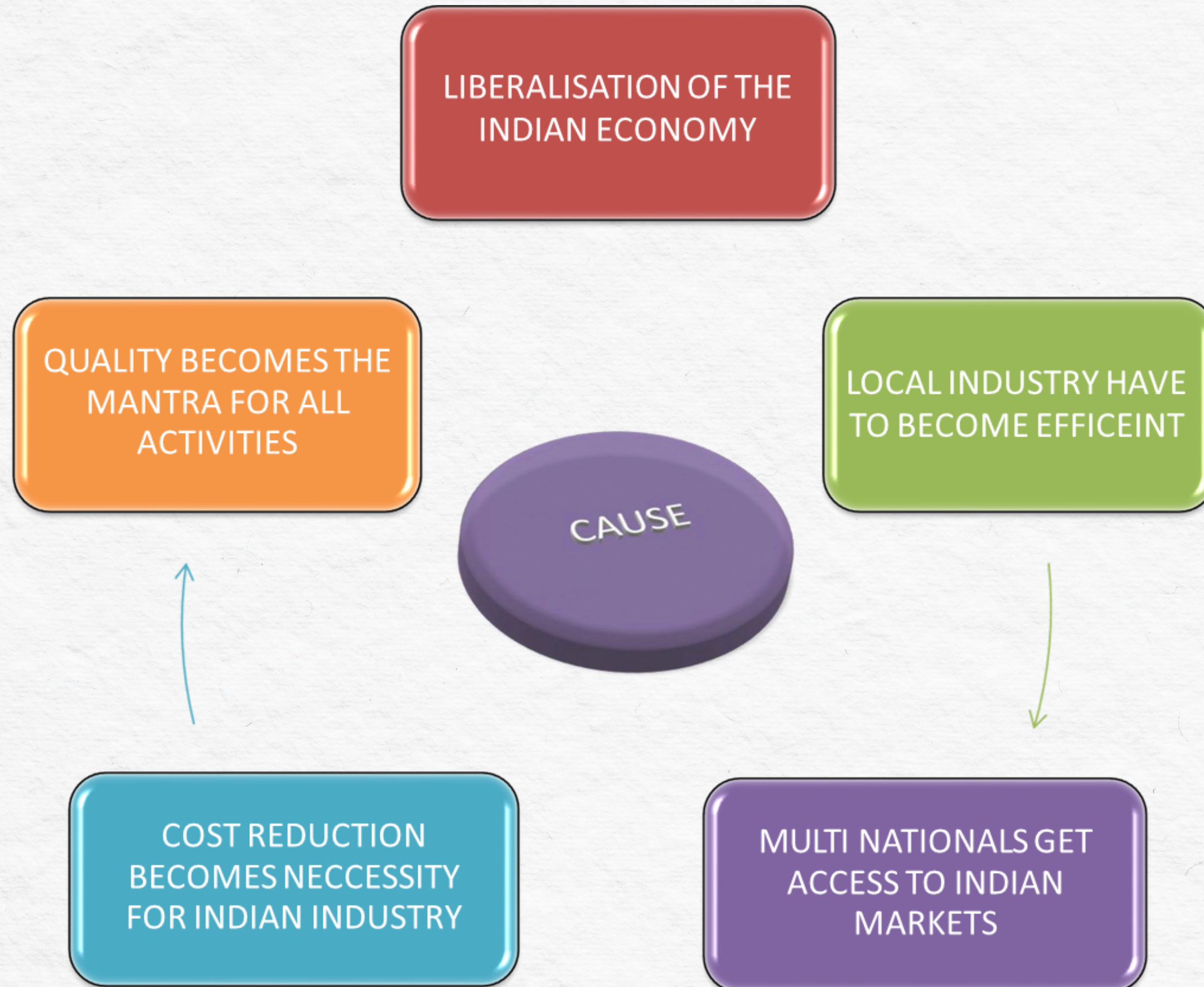
Manufacturing Facility



Our Process



Our Goal



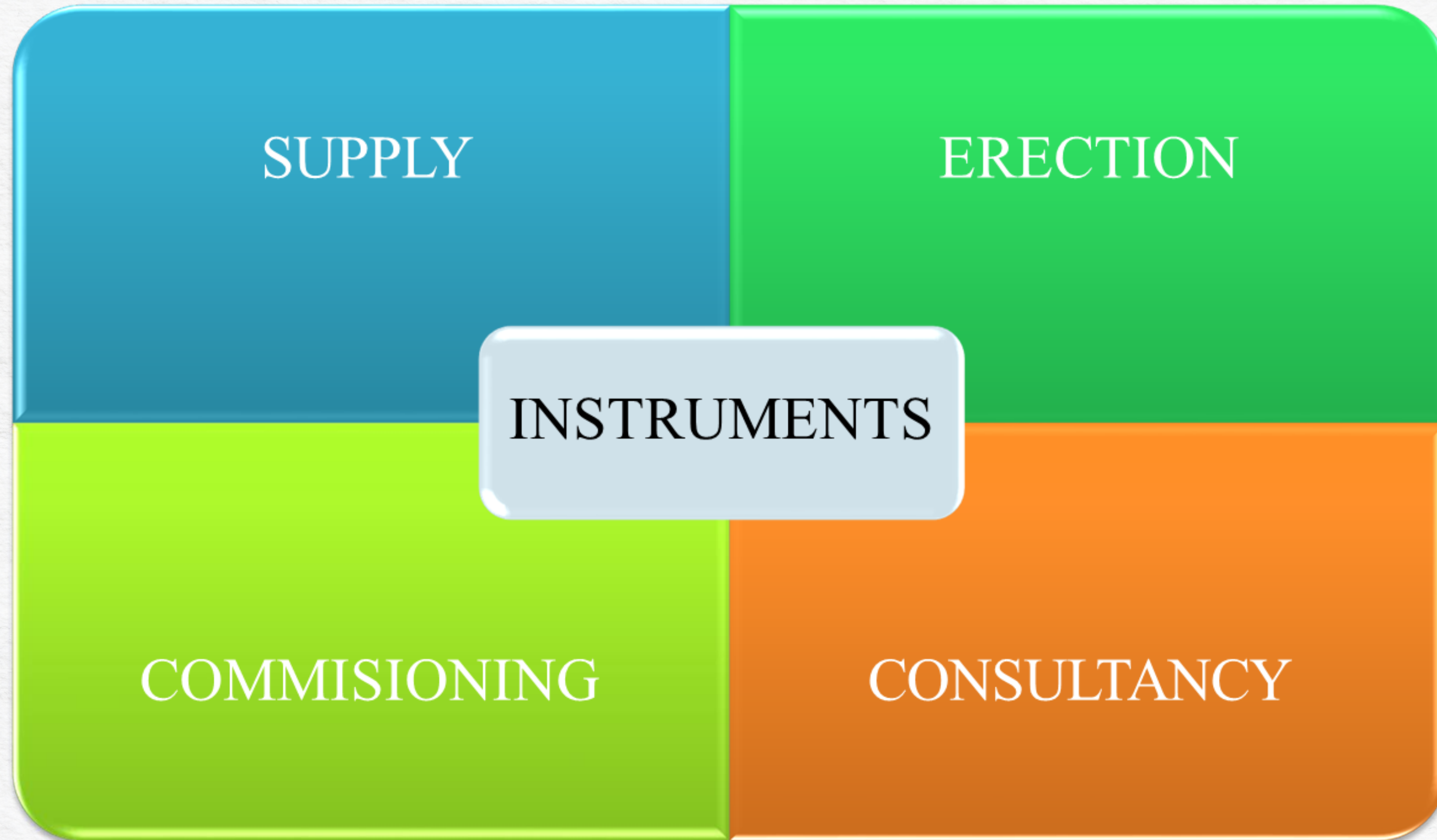
Industrial Efficiency



**New
Technology**

Quality

Instrumentation Process



Our Objective.

- **Quality First**
- **Customer Satisfaction – we believe in long-term relationships.**
- **Timely Execution Of Purchase Order & Completion Of Service Job with a deadline.**
- **Keeping abreast with the latest technologies.**
- **Understanding customer requirement.**
- **Sales & Service support for 24 hrs./365 days.**
- **Working for a cost effective solution that meets the customer's need and today's technologies.**

OUR VISION.

- ... **We work to increase your product quality**
- ... **We work to reduce your manpower cost**
- ... **We work to improve your Industrial efficiency**
- ... **We work to increase your productivity**
- ... **We work to reduce your down time.**

VARDHAN GROUP OF INDUSTRIES

- **ACE CRANE INDIA PVT.LTD.**
- **ANJANIA CRANES PVT.LTD.**
- **JAIDEV INDUSTRIES PVT.LTD.**
- **RBH MINING INDIA PVT.LTD.**



Our Contact



+91- 6207953701 / 9142091560



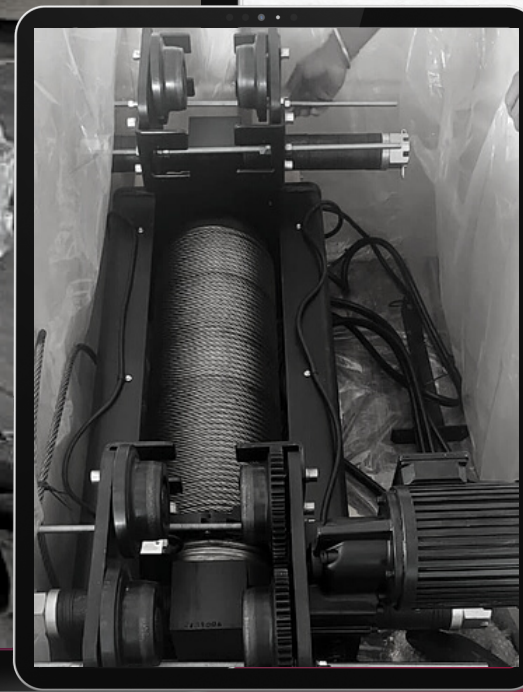
ace-crane.co.in



info@ace-crane.co.in



Jamshedpur, Bangalore, Bhubneswar, Pune,
Mumbai and Ahmedabad.





THANK YOU

